

TOOLKIT^{PLUS} NO. 3

Number of jigs & fixtures included in the kit: 60



8x

FASTENING CLAMP
N.001A



2x

FASTENING CLAMP WITH LEVER
N.001B



18x

FAST ASSEMBLY BOLT 23 PLUS
N.002PLUS



4x

ECCENTRIC STOP PLUS Ø100
N.003PLUS



4x

STOP PLUS 150
N.004PLUS



4x

STOP PLUS 225
N.005PLUS



1x

PROTRACTOR PLUS
N.008PLUS



2x

ANGLE PRECISION SQUARE (FLAT) PLUS 320X150
N.010PLUS



2x

ANGLE PRECISION SQUARE (FLAT) PLUS 350X250
N.011PLUS



4x

ANGLE BRACKET PLUS 185X175
N.012PLUS



2x

ANGLE BRACKET PLUS 200X200
N.013PLUS



2x

ANGLE BRACKET PLUS 300X190
N.014PLUS



1x

ANGLE BRACKET PLUS 450X250
N.015PLUS



2x

PRISM Ø58MM 130°/90°
N.023



1x

WELDING TORCH HANDLE
N.020



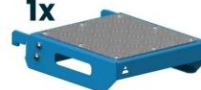
1x

FAST ASSEMBLY BOLT SHELF M
T.011B



1x

CLAMP SHELF M
T.011D



1x

FLATSHELF M
T.011F